

JACK HENRY

PENNSYLVANIA AVE.

W. 47TH ST.

1 ARCHITECTURAL SITE PLAN
SCALE: 1/8" = 1'-0"

PRELIMINARY, NOT FOR CONSTRUCTION, RECORDING PURPOSES OR IMPLEMENTATION

ARCHITECT	ARCHITECTS
STRUCTURAL ENGINEER	STRUCTURAL
CIVIL ENGINEER	CIVIL
GENERAL CONTRACTOR	GENERAL CONTRACTOR
MECHANICAL ENGINEER	ENGINEER
PLUMBING ENGINEER	PLUMBING
ELECTRICAL ENGINEER	ELECTRICAL

COCINA 47
604 W. 47TH ST.
KANSAS CITY, MISSOURI



TRI Architects
1790 S. Brentwood Blvd.
St. Louis, Missouri 63144
© Copyright 2021 www.triarchitects.com
T: 314-305-9760

DATE: 10-18-2021

REVISIONS

DWG BY Author

TRI PROJECT NO. 20-094

SHEET NO.

SD000
SITE PLAN

PRELIMINARY, NOT FOR CONSTRUCTION, RECORDING PURPOSES OR IMPLEMENTATION

ARCHITECT	STRUCTURAL ENGINEER	CIVIL ENGINEER	GENERAL CONTRACTOR	MECHANICAL ENGINEER	PLUMBING ENGINEER	ELECTRICAL ENGINEER
TR,I ARCHITECTS	STRUCTURAL	CIVIL	GENERAL CONTRACTOR	ENGINEER	PLUMBING	ELECTRICAL

COCINA 47
604 W. 47TH ST.
KANSAS CITY, MISSOURI



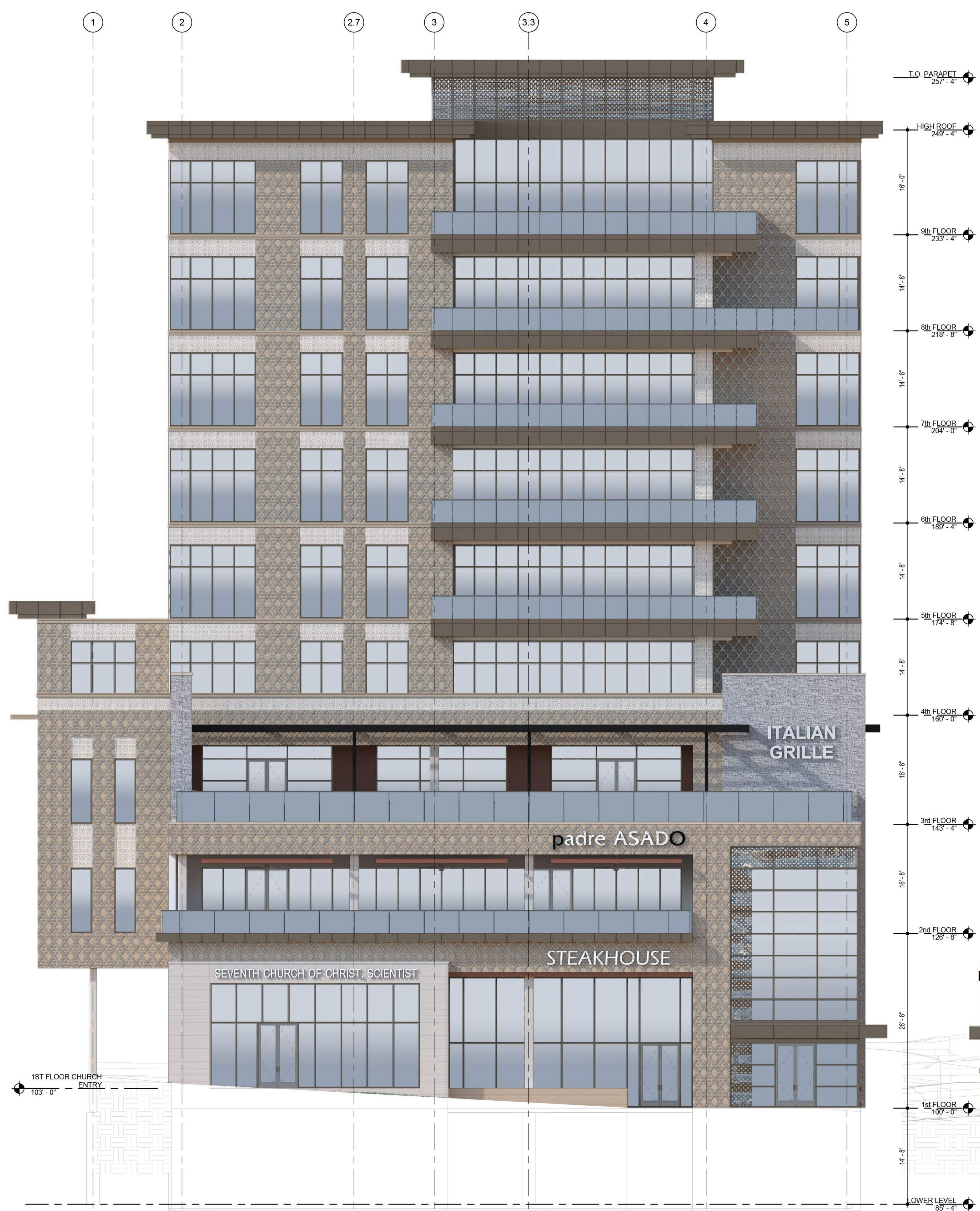
TR,I Architects
1790 S. Brentwood Blvd.
St. Louis, Missouri 63144
© Copyright 2021 www.triarchitects.com

DATE: 10-18-2021

REVISIONS

DWG BY Author
TR,I PROJECT NO. 20-094
SHEET NO.

SD011
ELEVATIONS



SOUTH ELEVATION
SCALE: 1/8" = 1'-0"



EAST ELEVATION
SCALE: 1/8" = 1'-0"

PRELIMINARY, NOT FOR CONSTRUCTION, RECORDING PURPOSES OR IMPLEMENTATION

ARCHITECT
STRUCTURAL ENGINEER
CIVIL ENGINEER
GENERAL CONTRACTOR
MECHANICAL ENGINEER
PLUMBING ENGINEER
ELECTRICAL ENGINEER

TR,I ARCHITECTS
STRUCTURAL
CIVIL
GENERAL CONTRACTOR
ENGINEER
PLUMBING
ELECTRICAL

COCINA 47
604 W. 47TH ST.
KANSAS CITY, MISSOURI

TRI ARCHITECTS

TR,I Architects
1790 S. Brentwood Blvd.
St. Louis, Missouri 63144
© Copyright 2021
www.triarchitects.com
T: 314-305-9760
www.triarchitects.com

DATE: 10-18-2021

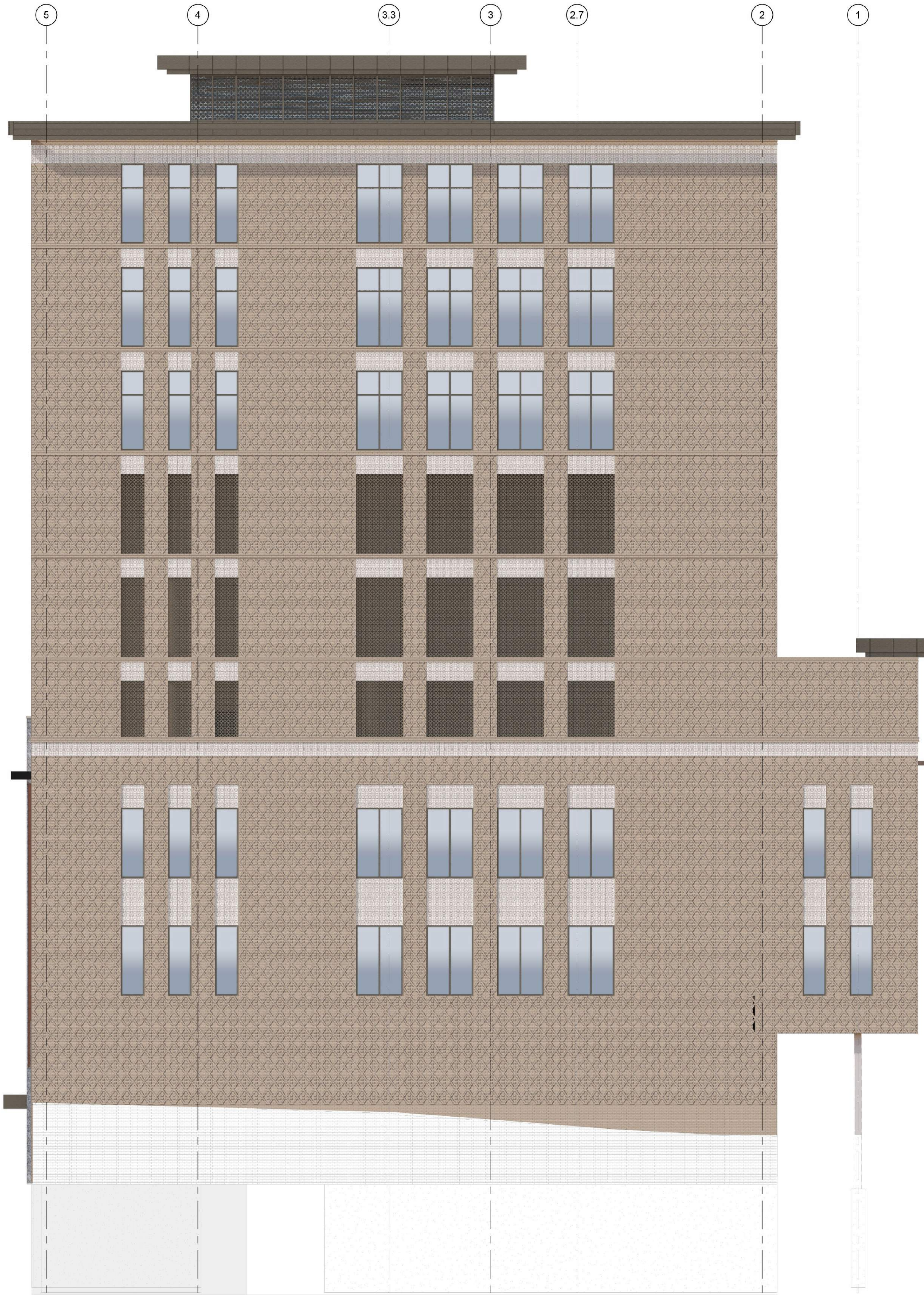
REVISIONS

DWG BY Author

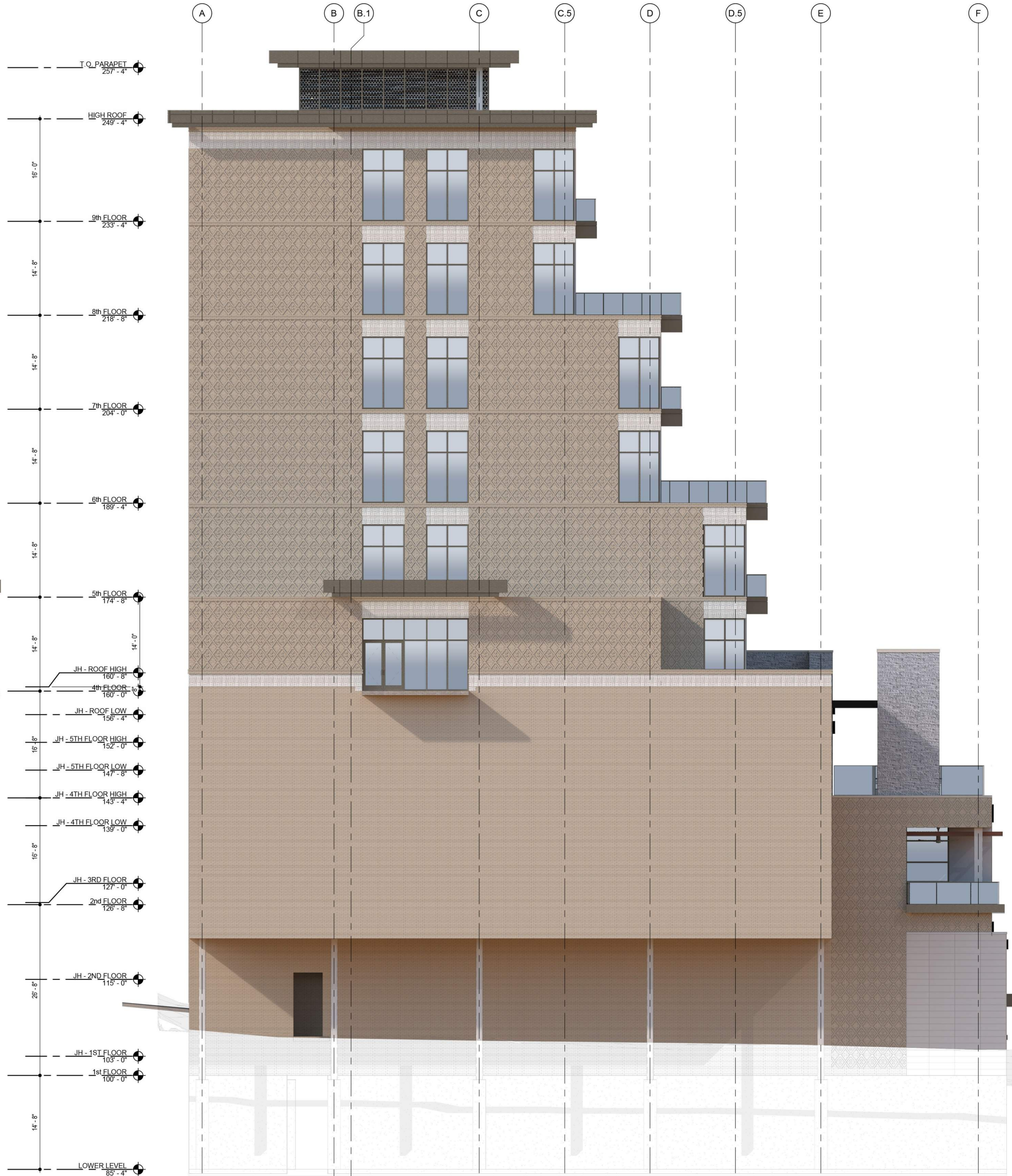
TR,I PROJECT NO. 20-094

SHEET NO.

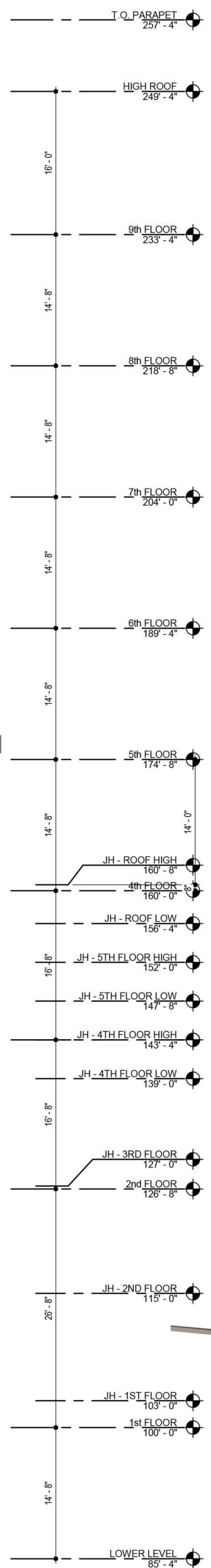
SD012
ELEVATIONS



NORTH ELEVATION
SCALE: 1/8" = 1'-0"



WEST ELEVATION
SCALE: 1/8" = 1'-0"





SOUTH ELEVATION



ARCHITECTS
 1790 S. Brentwood Blvd.
 St. Louis, Missouri 63144
 © Copyright 2021

COCINA 47

KANSAS CITY,
 20-094

MISSOURI
 10-18-2021



PERPECTIVE

TRI

ARCHITECTS

1790 S. Brentwood Blvd.
St. Louis, Missouri 63144

© Copyright 2021

COCINA 47

KANSAS CITY,
20-094

MISSOURI
10-18-2021



TRI ARCHITECTS
© Copyright 2021

PERPSECTIVE

COCINA 47



ARCHITECTS
1790 S. Brentwood Blvd.
St. Louis, Missouri 63144
© Copyright 2021

KANSAS CITY,
20-094

MISSOURI
10-18-2021