



## EVENTS



### Historic Preservation Awards

**SAVE THE DATE**  
**March 26th @ 5:30 pm**  
"The Temple"

Historic Kansas City will announce the 2019 Preservation Awards on March 26th. The Awards will be hosted by "[The Temple](#)" at 1330 E. Linwood Blvd., Kansas City, MO

Join us and be inspired! Get Tickets [here](#).

NOT a Member? Join [here](#).

### HKC Member Exclusive Event

**MAY 2020**  
"Fire House"

HKC's exclusive annual members only meeting will be held in May. Details coming soon. NOT a Member? Join [here](#)

The event will be hosted by the [Fire House](#), 4518 Troost. Built in 1931, it was the only fire station in the Midtown area for more than 40 years. The Fire House has been fully renovated and updated as an event venue. Come join us!



### Lawn Party

**SAVE THE DATE**  
**Sunday, June 14th @ 1:00 pm**  
"Mansion in the Park"



# SAVE THE DATE



## lawn party

June 14  
The Mansion in the Park

HKC is hosting a June croquet and lawn party. We will have exclusive access to "The Mansion in the Park", 6700 Elmwood Ave., built in 1909, the Ira C. Van Noy Residence was designed as a country estate by architect Clifton B. Sloan.

Tickets available soon!

## NEWS

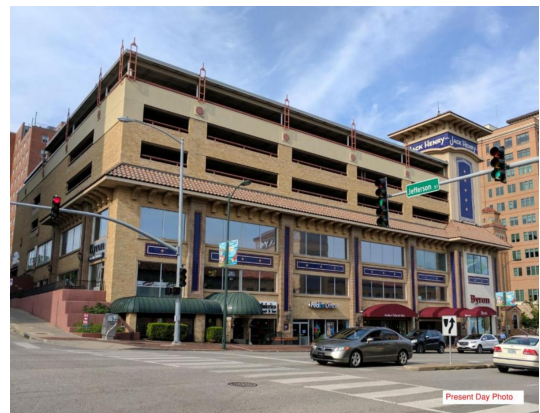
### Test of Plaza Overlay Ordinance

Drake Development is seeking the first test of the Plaza Bowl Overlay District's height restrictions, which were codified last year by Ordinance. The Plaza Bowl Overlay District allows an applicant to seek the approval of a deviation from the City Plan Commission and City Council.

Drake's plan calls for the renovation of the existing Jack Henry building. As originally proposed, a small tower at the building's SW corner would exceed the height restriction by 9 feet. HKC met with Drake Development twice. HKC's position at CPC:

- It was built in 1954, altered in 1997, and has lost its historic integrity.
- This case will set a dangerous precedent.
- Drake submitted no compelling need that justifies the height deviation.
- That no standards exist to evaluate any request for deviation.
- We requested a 2 week continuance to address said issues.

City staff and the City Plan Commission [recommended approval \(link\)](#). The proposal continues to evolve and will be heard at the [NPD Committee of City Council](#) next Wednesday, February 5th @ 1:30 PM, 26th Floor, Council Chamber.



## Thacher Reuse-Neighborhood Markers

After years of debate and numerous public





hearings concerning the fate of Thacher School, in 2015 the KCSB demolished the 115 year old school against the wishes of the Indian Mound Neighborhood Association, surrounding Historic Northeast stakeholders, and HKC.Thacher, formerly located at the corner of Independence Ave and Quincy Ave, was built in 1900 and designed by architect Charles A. Smith. In an effort to save what was left of the school, the Indian Mound Neighborhood Association secured five dump truck loads of brick, limestone, and archways from the school and stored them for future use. With the support of PIAC representatives, the Indian Mound Neighborhood has been able to reuse stone from the demolished school to create neighborhood markers. These markers will bare the neighborhood associations name for generations to come. Read more [here](#).

## Epperson House

UMKC is seeking a public-private partnership towards the restoration of the Epperson House; along with a strategic renovation and repurposing of the private spaces for compatible market rate revenue-generating office or hospitality uses that support the urban engagement mission of UMKC. The University has launched a two-phase project selection process:

- Phase 1 - Request for Information (due 2/13/20)
- Phase 2 - Request for Proposal

RFI documents are available [here](#). Direct Questions to Robert A. Simmons, AIA, at [simmons@umkc.edu](mailto:simmons@umkc.edu)



## Plaza Hotel

In 2016, many conditions of compromise were reached between the city, the developer and Plaza area statkeholders towards the development of a proposed hotel project, south of 46th St. and west of Wornall Road. In particular, an ordianance established a Sounding Board including Parkway Towers, the Plaza Westport Neighborhood Association, 4646 Broadway Condominiums, and HKC, to refine the development of a final plan.





The plan proposes a 175-room Tribute Hotel (10 stories), a 120-room Aloft Hotel (7 stories). The CPC approved the MPD plan in January. Post MPD final development plan approval by City Council, the Sounding Board will serve a critical role in assuring compliance of the exterior materials and refined elements with the Plaza architectural guidelines from the Midtown Plaza Area Plan. More details [here](#).

## Implementation Has Begun

HKC and our partners the Westport Regional Business League and the City, led the effort to develop the Westport District Master Plan. Implementation of the Plan is underway! The City Council recommended an amendment to the Midtown Plaza Area Plan (MPAP). In effect, the Westport Plan will become a sub-area, similar to the Plaza Plan, becoming the policy plan for guiding future land use, zoning and character decisions.

Next, this plan has created property owner and public support for the adoption of a Special Character Overlay District along Westport Road and Pennsylvania Avenue, which would allow Westport to evolve in a way that is sensitive to the existing context and consistent with its historic character. More to come this year on next steps toward adoption of the overlay.



## Sara Rector

The Rector Mansion has been on HKC's "Most Endangered List" in an effort to bring awareness to the plight of this important site. Sarah Rector's story is a relatively untold story of American success and a woman's prosperity. During segregation, her complex legacy reached beyond racial boundaries.

Learn more about Sarah [here](#).

As a part of our field service outreach, HKC has established a relationship with the new building owner, United Inner City Services' (UICS) and have supported their efforts to seek funding and explore restoration of the Sarah Rector Mansion. A grant from the National Trust for Historic Preservation has laid the groundwork for this ongoing effort.



## The Curious Case of The Animals at The Landing Mall

In the 1960s, 30 life-sized sculptures stood at the entrance of a once-popular Kansas City, Missouri, mall—The Landing Shopping Center on Troost Avenue. [Click](#) to learn more.



## Seeking Women's History Sites

As the US celebrates the 100th anniversary of some women earning the right to vote, the National Trust wants to tell the full history—to uncover and uplift women across the centuries whose vision, passion, and determination have shaped the country we are today. What places have you encountered where women made history? Submit a photo and a short description to the Trust [here](#).

## HKC SILVER SPONSORS



## It benefits to partner with Historic Kansas City!

Whether it is to provide opportunities to reach a high-quality audience or to support economic growth or to protect tangible history, we know our events and outreach initiatives provide an atmosphere that is unmatched in their ability to bring together like-minded companies and individuals who have an interest in making historic preservation economically viable. As the design and construction industry continues to evolve and grow, relationships are increasingly important. **HKC's annual sponsorship program** is specifically focused on supporting the development of strategic connections between our members, followers and sponsors.

**HKC's annual sponsorship program** offers a range of sponsorship opportunities to give you direct marketing and visibility benefits for 12-months. Click [here](#) for details and the **FIVE** reasons why YOU should be a business sponsor for 2019.



## Follow HKC Daily

HKC posts valuable content on Facebook daily. It's easy. Click icon & "Follow" HKC as your **ONLY** friend.

CONNECT WITH US!

